

# State of Wyoming Corner Record

(In compliance with the CORNER PERPETUATION AND FILING ACT, Wyoming Statutes, 1997 Section 33-29-140 et. seq., and the Rules and Regulations of the Board of Professional Engineers and Professional Land Surveyors)

*Reverse side of this form may be used if more space is needed.*

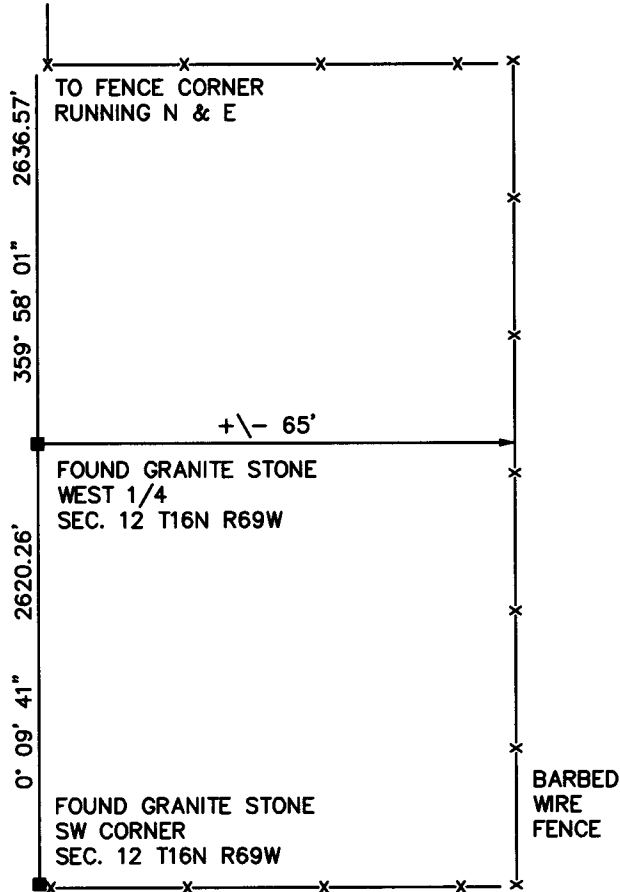
Record of original survey and citation of source of historical information (if corner is lost or obliterated). Description of corner monumentation evidence found and/or monument and accessories established to perpetuate the location of this corner. Sketch of relative location of monument, accessories, and reference points with course and distance to adjacent corner(s) (if determined in this survey). Method and rationale for reestablishment of lost or obliterated corner.

**RECORD:** SET A GRANITE BOULDER 12 X 10 X 8 FOR 1/4 SECTION CORNER.

**MONUMENT FOUND:** FOUND A 7" X 7" PINK GRANITE STONE PROJECTING 7" ABOVE GROUND SURFACE WITH 1/4 ON WEST FACE.

**MONUMENT SET:** NOTHING SET.

**REFERENCES:** STONE LIES +/- 65' WEST OF N-S BARBED WIRE FENCE.  
NO REFERENCES WERE SET.



Date of Field Work: 8/31/10

Office Reference: 08300

## Monument Inscription

### Cross Index Plat

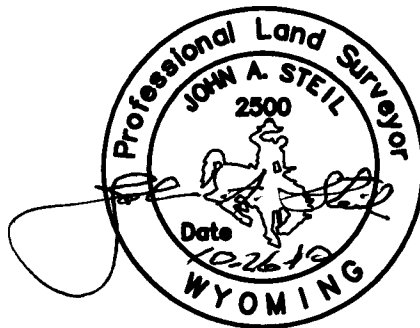
	1	2	3	4	5	6	7	8	9	10	11	12	13	14	15	16	17	18	19	20	21	22	23	24	25
A																									
B	+	+	+	+	+	+	+	+	+	+	+	+	+	+	+	+	+	+	+	+	+	+	+	+	+
C		6				5					4					3					2				1
D																									
E																									
F																									
G																									
H																									
I																									
J																									
K																									
L																									
M																									
N																									
O																									
P																									
Q																									
R																									
S																									
T																									
U																									
V																									
W																									
X																									
Y																									
Z																									
	1	2	3	4	5	6	7	8	9	10	11	12	13	14	15	16	17	18	19	20	21	22	23	24	25

Firm/Agency, Address

**STEIL SURVEYING SERVICES LLC**  
**1102 WEST 19th STREET**  
**CHEYENNE WY 82001**  
 Telephone Number: **(307) 634-7273**

*This corner record was prepared by me or under my direction and supervision.*

*SEAL & SIGNATURE*



RECORDED 12/23/2014 AT 4:13 PM BK# 2422 PG# 314  
 Debra K. Lathrop, CLERK OF LARAMIE COUNTY, WY PAGE 1 OF 1  
 REC# #: 651938

Corner Name WEST 1/4 Section 12, T 16 N, R 69 W, 6th P.M.

Cross-Index No.: G-21

County: LARAMIE Wyoming

SBRPEPLS/PLSW: March 1994; PLSW January 1998